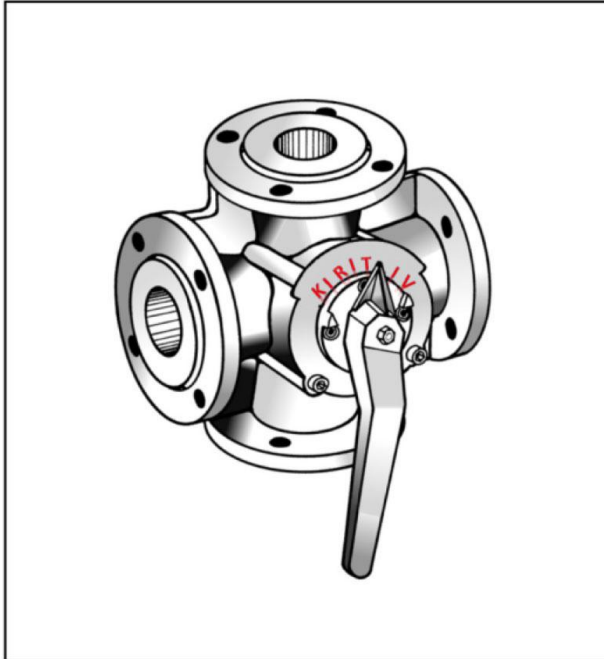


KIRIT IV

4-WAY ROTARY VALVES

PRODUCT DATA



APPLICATION

For water temperature control in heating and air conditioning applications, paper pulp and board mills and chemical industries, paint and ceramic industries. the special valve characteristics are especially designed that can be used as 3-way distributors and refiner-fittings. mixing of matters can be easily done as the hand lever clearly indicates the chosen connection.

FEATURES

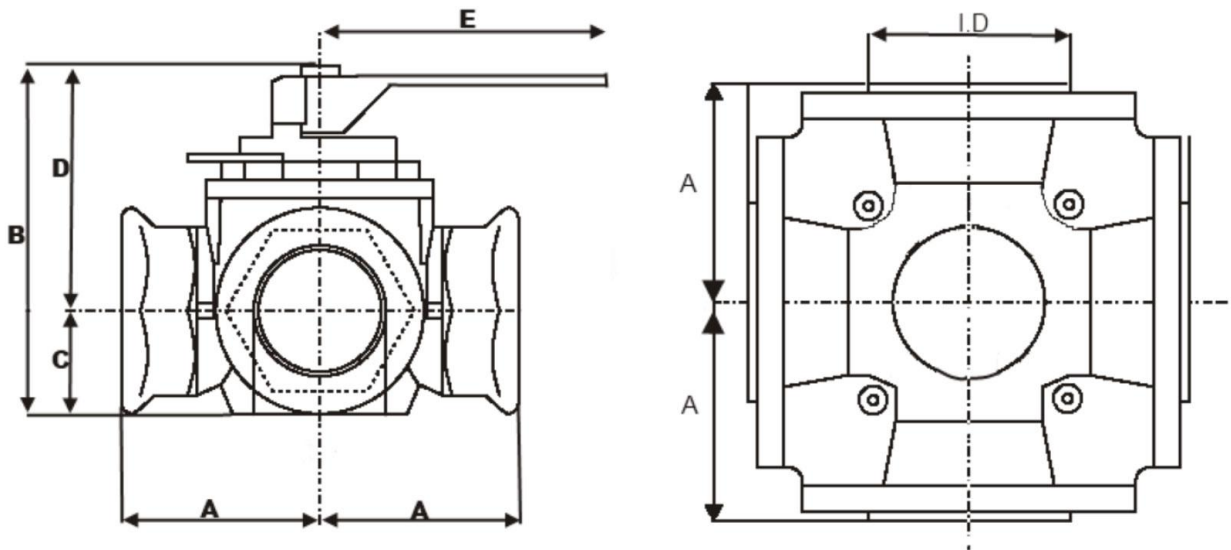
- Cast bronze slide valve for long life-span
- Optimized characteristic for supply water temperature control, paper pulp, petroleum, board mills and chemical industries
- Protected against corrosion
- Reliable mounting for electrical actuators
- Clear position indicator
- Wide range of flow rates with suitable actuators

SPECIFICATIONS

Nominal static pressure	6 bar, 600 kPa
Maximum pressure drop	depending on type (see section "Specification and Order Number" on page 2)
Leakage rate	1% of k_{vs}
Ports	Flange in
Angle of rotation	360°
Flange	according
Packing	Double o-ring sealing
Material body	Cast iron
Material inner parts	Cast bronze
Medium	Heating water according to VDI 2035 (oxygen concentration less than 0.2 g/m ³ , pH 8...9.5), glycol-water mixtures (max. 50% glycol)
material temperatures in the valve	2... 130 °C (DN200 and larger: 2... 110 °C), non-condensing
Weight	depend on type (see sections "Dimensions of Kirit IV (mm)" on page 3)
Flow characteristic	equal percentage

DIMENSIONS OF KIRIT IV (MM)

type	I.D	A	B	C	D	E
KIRIT IV	100	165	317	135	182	500
KIRIT IV	125	200	370	155	215	550
KIRIT IV	150	220	410	178	232	600
KIRIT IV	200	275	500	225	275	750

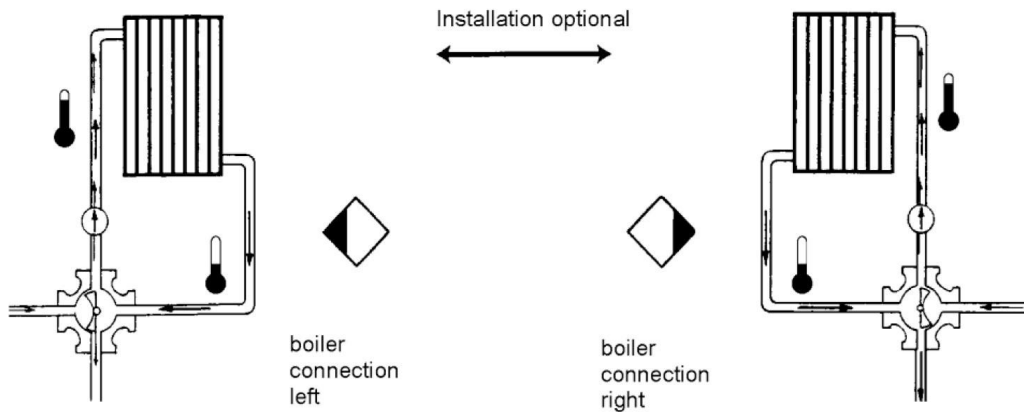
**SPECIFICATION**

I.D	OS Number Internal Thread	OS Number flange	kVS [m ³ /h]	Δp [kPa]	Δp [kPa]
100	-	-	160	80	80
125	-	-	250	50	50
150	-	-	400	40	40
200	-	-	630	30	30

OPERATION

In this figure below, the valve controls a mixing water temperature with a rotating plug. The plug adjusts with two control curves the water flow of two inputs. The required flow water temperature is achieved by adding a proportion of return water to the boiler hot water. For optimal control performance, Kirit IV has special control characteristics.

MOUNTING



KIRIT INDUSTRIES

KIRIT INDUSTRIES
NEAR GHIYANAGAR,
OPP. UNION CO-OPERATIVE BANK,
NARODA GAM, -382330
AHMEDABAD, GUJRAT,
INDIA.
PH:- (O) +91-079- 22823126,0417
EMAIL:- kiritindustries59@gmail.com info@kiritpumps.com
Website :- www.kiritpumps.com